

Opinions on Smoking Issues in the Counties of Clinton, Essex, and Franklin

A Survey Conducted of Residents May 2 – May 16, 2011

June 23, 2011

Dr. Don Levy
Office: 518-783-2901
Fax: 518-786-5052
dlevy@siena.edu

Table of Contents

Past and Current Use of Tobacco Products	2
Personal Policies about Smoking	10
Renting and Limiting Smoking in Rental Units	11
Attitudes towards Legislation.....	13
Selling Tobacco Products.....	16
Teen Smoking.....	20
Demographics.....	23
Survey Procedures and Samples Derived.....	24
Survey Script	25

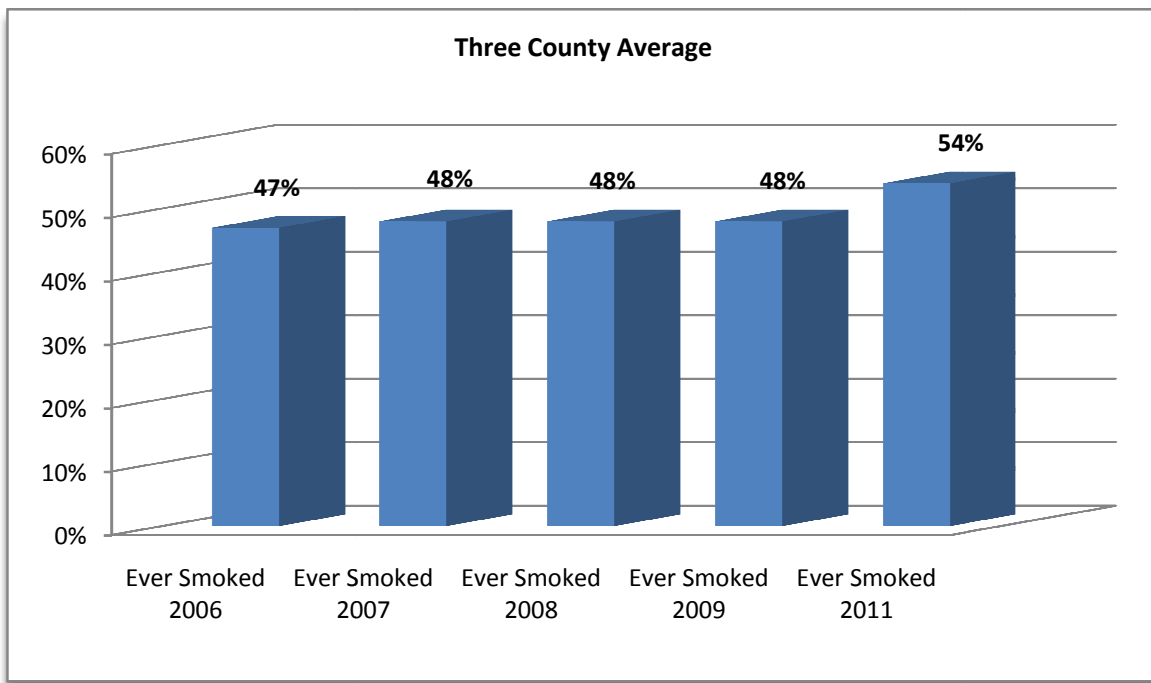
Past and Current Use of Tobacco Products

Residents of each of the three counties, Clinton, Essex and Franklin, report having smoked at least 100 cigarettes during their life at a rate of at least 50%. The three county rates remain relatively similar at between 50.4% and 59.6%. But, when compared to the 2009 survey, the percentage of those that have ever smoked has increased in each of the three counties.

Prevalence of Tobacco Use

Q 19. Have you smoked at least 100 cigarettes in your entire life?

	County														
	Clinton					Essex					Franklin				
	2006	2007	2008	2009	2011	2006	2007	2008	2009	2011	2006	2007	2008	2009	2011
Yes	40.8	45.9	45.6	45.7	50.4	46.9	46.9	49.2	48.2	51.6	54.6	51.7	48.6	50.0	59.6
No	58.9	53.4	53.8	54.3	49.6	52.1	52.2	50.9	51.4	48.0	44.3	45.7	50.7	49.8	40.2
Don't know	0.2	0.8	0.6	0.0	0.0	0.9	0.8	0.0	0.3	0.3	1.0	2.6	0.6	0.2	0.2
Refused	0.0	0.0	0.0	0.0	0.0	0.0	0.0	0.0	0.0	0.0	0.1	0.0	0.0	0.0	0.0



It remains fair to say that approximately one of every two adults across the three county area have smoked at least 100 cigarettes across their lifetime.

Today, those respondents that said they had ever smoked were asked whether they smoke every day, some days or not at all. Although some might argue that this method overstates the number of current smokers, we will, after this description, treat those that currently smoke every day or some days as “currently smokes.”

Everyday smokers were as a percentage of ever smoked highest in Franklin at 38.9% up from 36.7% two years ago. Clinton had the lowest percentage at 28% and Essex was in between registering 28.5% down from 32.4%. Stated as a percentage of the entire population, 23% of Franklin residents, 15% of Essex residents and 14% of Clinton residents smoke on a daily basis. Additionally, 6% in Franklin, 3% in Essex and 6% in Clinton smoke some days.

Q 20. Do you now smoke cigarettes every day, some days, or not at all? (asked only if yes to Q 19)

	Clinton					Essex					Franklin				
	2006	2007	2008	2009	2011	2006	2007	2008	2009	2011	2006	2007	2008	2009	2011
Everyday	34.4	26.2	15.3	27.8	28.0	18.9	20.1	15.9	32.4	28.5	40.9	27.2	21.0	36.7	38.9
Some days	4.4	7.6	4.4	9.1	11.5	7.8	5.7	2.9	2.8	6.3	5.3	11.8	4.5	10.4	10.7
Not at all	61.2	66.2	80.4	63.1	60.5	73.3	74.2	81.3	64.9	65.1	53.7	61.0	74.4	53.0	50.4

Summary

	Clinton					Essex					Franklin				
	2006	2007	2008	2009	2011	2006	2007	2008	2009	2011	2006	2007	2008	2009	2011
Currently smoke	16.1	18.2	16.5	16.9	19.9	12.2	13.7	15.8	17.1	18.1	25.9	21.8	22.5	23.6	29.7
Did smoke	23.9	26.7	29.1	28.8	30.5	34.1	33.4	32.8	31.2	33.8	27.8	29.9	26.1	26.4	30.1
Never smoked	59.9	55.2	54.4	54.3	49.6	53.7	52.9	51.4	51.4	78.0	46.3	48.3	51.4	49.8	40.2
No answer	N/A	N/A	N/A	0.0	0.0	N/A	N/A	N/A	0.3	0.0	N/A	N/A	N/A	0.2	0.0

All can be grouped into three categories – Never smoked, Smoked in the past but not now, and Currently smoke. Currently Franklin has the highest measured rate of smoking at 30% up from 24%, followed by both other counties at 20% in Clinton up from 17% and 18% in Essex up from approximately 17%. A quick look at the variation in the rate of current smokers from 2006 through today leads one to see, when considering the confidence interval dictated by this sample size, that while it is possible that the rate of smoking has remained constant, it appears that in these three counties we may be seeing a slight increase. It appears that between 2006 and 2009 approximately and consistently, 17% to 24% of all adults in these three counties smoked cigarettes either some days or every day. Today in each county, the rate is at the highest point in the five instances at which it was measured. The rate of smoking is higher in Franklin than in the other two counties. Still, in both Clinton and Essex, in 2011 the rate is at its highest point and in both cases the rate now approaches 20%.

In all three counties, men are more likely to have ever smoked than are women, and in all three counties residents with less than a college degree are more likely to have ever smoked than are residents with a college degree. In each case, residents with household incomes above \$100,000 are less likely to have ever smoked than those with incomes below \$100,000. Young people smoke at rates slightly above the average in all three counties. In all three counties, significantly more residents without a college degree continue to smoke as compared to those with a college diploma. Where two years ago there was some evidence that men were continuing to smoke at rates greater than women, this year we do not see a meaningful gender variation in the percentage of currently smoking adults in these three counties.

In Essex, more residents purchase cigarettes at convenience stores or gas stations than through any other source. But we find a large change in buying behavior with the percentage of smokers

from both Clinton and Essex that purchase at Indian Reservations rapidly increasing. Today, 60% of Clinton smokers, up from 43%, and 36% of Essex smokers, up from 18%, purchase at Reservations. Franklin smokers continue to purchase at Reservations at 64% up slightly from 61% two years ago. No doubt economic pressures have had an impact upon smokers going to Reservations in order to save money on tobacco purchases.

In Essex, 45% still buy at convenience stores or gas stations while in Clinton and Franklin about 3 of 10 buy tobacco at those locations. Less than 10% of smokers purchase cigarettes at the balance of outlets including grocery stores, pharmacies, the internet, tobacco shops and other locations.

While advertising issues discussed below can still lead to changes at convenience stores, gas stations, and groceries or pharmacies, in these counties with the possible exception of Essex, the prevalence of buying at Indian Reservations may impede any impact that changes at other locations could produce elsewhere.

Q 23. Where do you purchase your cigarettes most of the time?

	Clinton			Essex			Franklin		
	2008	2009	2011	2008	2009	2011	2008	2009	2011
Grocery Store	32.9	1.1	4.8	16.9	1.6	3.9	7.1	0.0	0.4
Convenience Store/Gas Station	26.9	52.3	31.8	61.7	73.4	45.4	52.6	34.6	30.0
Pharmacy	0.7	1.1	0.6	2.4	2.5	4.4	0.0	1.6	0.0
Reservation	34.4	42.7	59.8	15.5	17.7	36.3	34.6	61.1	63.9
Internet	0.0	0.9	N/A	0.0	0.0	N/A	0.0	0.7	N/A
Tobacco Shop	0.0	0.0	N/A	1.7	0.0	N/A	4.7	0.0	N/A
Other	5.1	1.8	2.4	1.8	1.4	8.9	1.0	1.0	5.2
Refused	NA	0.0	0.6	NA	3.4	1.1	NA	1.1	0.5

Very few respondents, between 9% in Essex, 8% in Franklin and 5% in Clinton, currently use any other tobacco products. In this investigation, nearly all of those that do use other tobacco products are men. Interestingly, included among those that said they use other tobacco products are small numbers of respondents that said they never smoked or smoked in the past.

Q 24. (Asked of all) Do you currently use any other tobacco products?

	Clinton	Essex	Franklin
Yes	5.1	9.3	8.3
No	94.9	90.7	91.7
Don't know/Refused	0.0	0.0	0.0

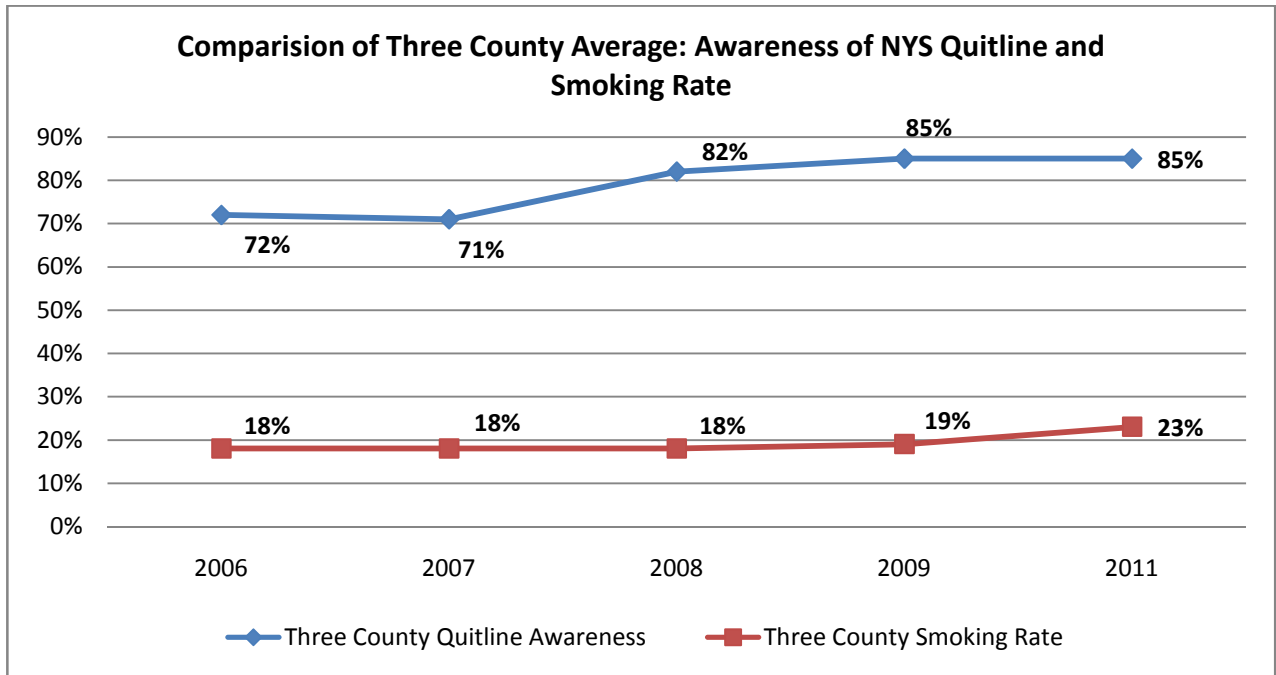
Q 25. Do you currently use ...? (of those that use any other tobacco products)

	Clinton					Essex					Franklin				
	2006	2007	2008	2009	2011	2006	2007	2008	2009	2011	2006	2007	2008	2009	2011
Cigars?															
Everyday	0.3	1.6	0.0	0.7	4.4	1.3	1.1	1.0	0.3	0.0	2.3	0.3	1.2	0.0	0.0
Some days	2.4	3.1	7.5	4.4	52.0	2.7	3.4	11.2	1.3	46.9	2.0	4.0	8.1	5.1	25.3
Not at all	97.3	95.3	92.6	94.8	43.6	96.0	95.5	87.5	98.4	53.1	95.7	95.7	90.8	94.9	74.7
Pipes?															
Everyday	0.7	0.0	0.3	0.0	4.0	0.7	0.7	0.0	0.3	2.0	1.6	0.0	0.0	0.7	5.4
Some days	0.0	0.6	1.4	0.2	14.4	2.6	0.2	4.5	0.3	32.0	0.6	0.3	0.9	1.7	3.5
Not at all	99.3	99.4	98.4	99.7	81.6	96.7	99.2	95.2	99.4	66.1	97.8	99.7	99.1	97.6	91.1
Chew?															
Everyday	0.0	0.5	0.0	3.5	7.1	1.1	2.3	0.4	0.4	14.9	1.6	1.5	0.9	0.4	6.9
Some days	0.0	0.1	2.0	1.5	14.1	0.5	0.7	4.3	2.4	27.6	0.7	1.3	1.6	2.4	50.4
Not at all	100.0	99.4	98.0	94.9	78.8	98.4	97.0	95.3	97.1	57.5	97.7	97.2	97.5	97.2	42.6
Snuff?															
Everyday	0.0	0.5	0.0	0.0	15.9	0.0	0.0	0.0	0.0	4.5	1.6	0.0	0.0	0.3	6.9
Some days	0.0	0.1	0.7	0.3	0.0	1.0	2.0	1.2	1.0	0.0	0.0	0.0	0.7	0.0	7.5
Not at all	100.0	99.4	99.3	99.7	84.1	99.0	98.1	98.8	99.0	95.5	98.4	100.0	99.3	99.7	85.6
Hookah?															
Everyday			0.0	0.0	0.0			0.0	0.0	0.0			0.0	0.0	1.3
Some days			4.4	0.0	2.7			4.8	0.0	0.0			1.0	2.4	0.0
Not at all			95.6	99.8	92.9			95.2	100.0	100.0			99.0	97.6	93.9
Don't know/Refused			N/A	0.2	4.4			N/A	0.0	0.0			N/A	0.0	4.7
Gutka?															
Everyday			0.0	0.0	0.0			0.0	0.0	0.0			0.0	0.0	0.0
Some days			1.3	0.0	0.0			0.8	0.0	0.0			0.0	0.0	0.0
Not at all			98.7	100.0	62.2			99.2	99.7	70.0			100.0	99.3	95.3
Don't know/Refused			N/A	0.0	37.8			N/A	0.3	30.0			N/A	0.7	4.7
Dissolvable tobacco?															
Everyday				0.0	0.0				0.0	0.0				0.0	3.5
Some days				0.2	0.0				0.0	0.0				0.0	0.0
Not at all				99.5	97.3				100.0	100.0				99.3	91.8
Don't know/Refused				0.2	2.7				0.0					0.7	4.7
Other?															
Everyday			0.0	1.5	11.3			0.0	0.0	16.0			0.0	0.0	5.4
Some days			0.7	1.3	63.4			0.0	0.0	5.9			0.0	0.7	34.4
Not at all			99.3	97.1	25.3			100.0	100.0	78.1			100.0	99.3	60.2

Extremely large majorities of respondents in all three counties have heard of the New York State Smokers' Quitline. From a low of 79% in Franklin, the number of respondents that have heard of the Quitline grows to 86% in Essex and 89% in Clinton. In each county, older residents stand out as the demographic group that has most infrequently heard of the Quitline but still at significant rates of 71% in Franklin, 72% in Essex and 77% in Clinton. Smokers in each county have heard about the Quitline at rates that approach 100% (95% Clinton, 95% Essex, 89% Franklin) and at rates greater than residents that smoked in the past or never smoked. Awareness of the Quitline has grown in each county appreciably since the 2006 survey when awareness of the Quitline was 7 to 20 points lower. Still we note in the graph below, the three county average awareness of the Quitline over the five survey points compared to the average three county smoking rate over the same period (note these are averages of counties not of all respondents pooled).

Q 27 Have you ever heard of the New York State Smokers' Quitline?

	Clinton					Essex					Franklin				
	2006	2007	2008	2009	2011	2006	2007	2008	2009	2011	2006	2007	2008	2009	2011
Yes	79.1	81.5	88.1	89.4	89.4	65.9	65.3	78.1	83.2	85.6	72.1	66.1	79.0	81.8	78.9
No	20.8	18.5	11.1	10.6	10.3	33.1	34.5	20.7	16.1	14.1	27.6	33.8	19.6	16.8	20.0
Not sure	0.1	0.1	0.8	0.0	0.3	1.1	0.3	1.2	0.6	0.3	0.2	0.1	1.4	1.4	1.1



If Quitline awareness was negatively correlated with smoking rate, we would expect to see a decided decrease in the smoking rate given the increase over time in awareness. At this point, we see no evidence in this relationship that growing awareness of the Quitline can be said to have had any effect directly upon the smoking rate. In fact, what we do see is that despite a growing awareness of the Quitline, the rate of smoking remains unchanged or somewhat elevated.

Q 28. (If heard of Quitline) How have you heard about the New York State Smokers' Quitline?

	Clinton					Essex					Franklin				
	2006	2007	2008	2009	2011	2006	2007	2008	2009	2011	2006	2007	2008	2009	2011
Television	67.3	60.7	58.9	78.7	72.3	56.1	55.7	57.2	68.0	63.3	54.7	57.7	63.5	73.8	57.6
Radio	12.7	18.0	11.8	39.2	39.6	12.5	11.2	18.1	23.5	36.8	10.7	7.7	16.1	27.1	24.0
Billboards	1.3	1.6	7.8	22.1	19.8	1.0	2.5	8.9	23.0	19.6	0.5	0.4	8.4	19.7	3.8
Doctor/ dentist	5.7	5.9	4.1	N/A	N/A	4.9	10.2	9.0	N/A	N/A	0.0	0.7	5.9	N/A	N/A
Family/ friend	2.2	3.4	1.5	N/A	N/A	2.4	1.2	3.1	N/A	N/A	0.0	9.4	1.7	N/A	N/A
Newspapers	9.3	4.0	6.3	N/A	N/A	5.0	5.8	11.9	N/A	N/A	3.2	3.6	5.9	N/A	N/A
Newspaper Article	N/A	N/A	N/A	18.5	36.4	N/A	N/A	N/A	13.1	16.6	N/A	N/A	N/A	21.1	11.5
Newspaper Ad	N/A	N/A	N/A	18.2	23.9	N/A	N/A	N/A	24.1	23.8	N/A	N/A	N/A	29.9	15.0
Movies	0.0	0.0	0.0	N/A	N/A	0.0	0.0	1.2	N/A	N/A	6.8	6.4	0.0	N/A	N/A
Movie theater slide ad	N/A	N/A	N/A	7.6	9.7	N/A	N/A	N/A	5.5	8.8	N/A	N/A	N/A	8.0	3.5
Internet	0.7	0.0	0.5	14.1	20.6	0.6	0.3	0.3	10.7	10.9	6.1	2.8	1.4	18.8	10.8
Poster	2.2	0.0	0.0	N/A	N/A	1.2	1.4	2.0	N/A	N/A	0.1	1.9	1.1	N/A	N/A
Event	N/A	N/A	N/A	5.6	10.7	N/A	N/A	N/A	4.4	5.6	N/A	N/A	N/A	5.5	3.8
Other	8.9	5.9	3.3	10.5	15.6	9.7	4.8	1.2	10.2	14.6	9.9	0.4	6.0	13.1	13.1
Don't know	3.2	7.6	10.1	0.0	0.3	9.3	12.8	8.4	0.0	0.9	5.2	0.0	2.7	0.0	0.8

Significant numbers of respondents from each county have heard of the Quitline through television, radio, billboards, newspaper articles and ads, and the internet. Nonetheless, fewer than 10% of all respondents in any of the counties have ever used the Quitline. But among smokers, 21% down from 34% in 2009 in Clinton, 22% in Essex and 12% in Franklin report having used the Quitline.

Q 29. (If heard of Quitline) Have you ever used the New York State Smokers' Quitline?

	Clinton	Essex	Franklin
Yes	8.9	8.0	4.2
No	91.1	91.8	95.8
Don't know/Refused	0.0	0.3	0.0

Q 22 & 23. During the past 12 months, have any healthcare providers/other groups advised you to stop smoking? (asked of those that currently smoke)

Doctor, nurse, physician assistant or clinic staff? (Prior to 2009: Doctor)

	Clinton					Essex					Franklin				
	2006	2007	2008	2009	2011	2006	2007	2008	2009	2011	2006	2007	2007	2009	2011
Yes	11.3	25.0	21.0	55.1	52.2	18.5	5.9	27.1	40.1	65.6	8.4	10.7	24.5	41.9	52.9
No	84.4	67.5	69.4	43.4	45.2	78.9	86.4	70.5	52.3	32.6	86.4	78.8	64.1	54.1	45.5
No visit	4.3	7.6	9.6	1.4	2.7	2.6	7.7	2.5	7.7	1.8	5.2	10.5	9.9	4.0	1.6

Dentist or Dental Hygienist? (Prior to 2009: Dentist)

	Clinton					Essex					Franklin				
	2006	2007	2008	2009	2011	2006	2007	2008	2009	2011	2006	2007	2007	2009	2011
Yes	11.3	25.0	21.0	55.1	26.3	18.5	5.9	27.1	40.1	19.7	8.4	10.7	24.5	41.9	27.4
No	84.4	67.5	69.4	43.4	62.5	78.9	86.4	70.5	52.3	69.8	86.4	78.8	64.1	54.1	71.0
No visit	4.3	7.6	9.6	1.4	3.4	2.6	7.7	2.5	7.7	10.5	5.2	10.5	9.9	4.0	1.6
Refused			N/A	N/A	7.8			N/A	1.8	0.0			N/A	0.0	0.0

Substance Abuse Counselor?

	Clinton					Essex					Franklin				
	2006	2007	2008	2009	2011	2006	2007	2008	2009	2011	2006	2007	2007	2009	2011
Yes			4.3	2.3	0.6			11.7	10.1	23.3			4.5	5.0	3.4
No			74.4	49.3	75.6			76.5	62.2	54.6			61.6	46.0	67.7
No visit			21.4	48.4	23.8			11.8	26.0	22.0			33.9	49.0	28.8
Refused			N/A	0.0	0.0			N/A	1.8	0.0			N/A	0.0	0.0

Mental Health Counselor?

	Clinton					Essex					Franklin				
	2006	2007	2008	2009	2011	2006	2007	2008	2009	2011	2006	2007	2007	2009	2011
Yes			6.8	2.3	1.8			4.0	23.0	13.2			4.5	2.0	0.0
No			71.7	46.2	78.9			80.2	53.7	68.9			57.4	49.6	71.7
No visit			21.5	51.5	19.2			15.8	23.3	17.9			38.1	48.4	28.3

Family, children, spouse, parents?

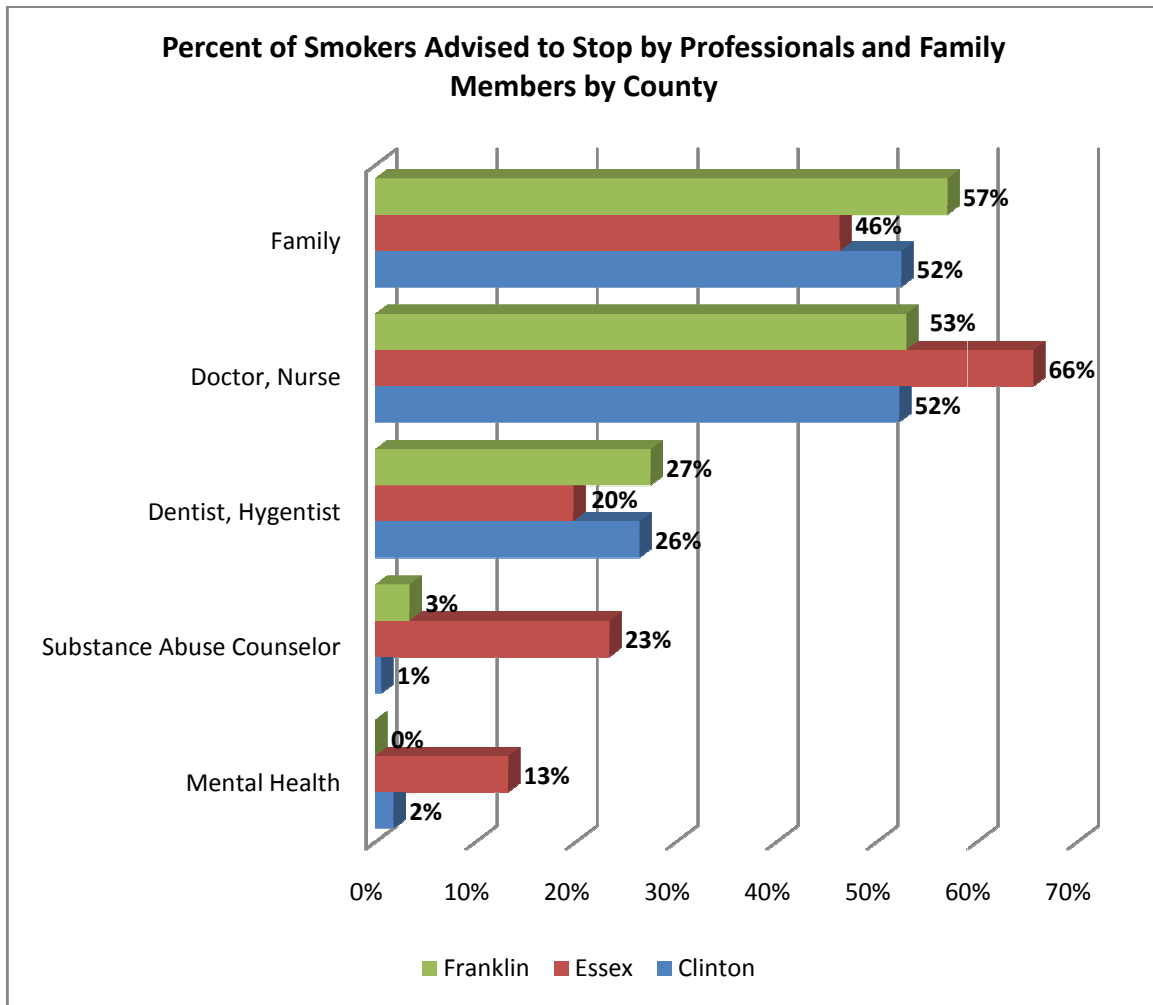
	Clinton					Essex					Franklin				
	2006	2007	2008	2009	2011	2006	2007	2008	2009	2011	2006	2007	2007	2009	2011
Yes			61.1	65.3	52.4			63.4	73.9	46.3			64.1	73.8	57.0
No			38.9	34.7	45.9			36.7	26.1	53.7			36.0	26.2	41.6
N/A			N/A	N/A	1.8			N/A	N/A	0.0			N/A	N/A	1.3

While this group of smokers reports that doctors, nurses and their assistants continue to advise them to stop smoking at the approximate same rate in Clinton and increasing rates in both Essex and Franklin, we note that a surprising decline has taken place among dental practitioners.

Over half in Clinton and Franklin to nearly two-thirds of smokers in Essex report receiving “quit” advice from doctors or nurses. The rate in both Essex and Franklin is up appreciably from 2009. But the rate at which dental professionals are advising smokers to quit has declined in each county by 14 to 29 points and today is only about 20 to 27%.

Family members, children and spouses also continue to advise smokers to quit but in each county at a declining rate. While in 2009 family members were advising between 65 and 74% of smokers to quit, today those rates are only 46 to 57%.

Still, it remains somewhat of a conundrum that despite continuing high awareness of the Quitline and its advertising, and seemingly ever present and consistent reminders from many professionals and caring family members, smoking rates remain consistently near 20%.



Personal Policies about Smoking

Consistent with previous surveys in 2003, 2006, 2007 and 2009, large majorities in each of the three counties continue to not allow smoking in their homes and cars. However, the percentage that does not allow smoking in homes or cars in many cases has declined slightly in this measurement. In Clinton county, 78% (down from 85%) of respondents do not allow smoking in their home and 79% (up from 78%) do not allow smoking in their vehicle. In Essex county, 79% (down from 80%) do not allow smoking in their home and 75% (down from 78%) do not allow smoking in their vehicle. In Franklin county, 73% (down from 78%) do not allow smoking in their home and 68% (down from 72%) do not allow smoking in their vehicle.

Q 1. First, I'd like to ask you a few questions about the smoking rules in your home and in your vehicle. Which statement best describes the rules about smoking in your home?

	Clinton					Essex					Franklin				
	2003	2006	2007	2009	2011	2003	2006	2007	2009	2011	2003	2006	2007	2009	2011
Not allowed	66.0	80.4	81.4	85.0	77.6	72.7	78.0	84.8	80.2	79.3	67.0	70.4	78.4	77.8	73.2
Some places	15.2	12.2	8.9	8.1	11.4	14.7	9.7	4.5	11.1	11.2	16.0	15.2	8.9	10.4	16.1
Anywhere	4.1	7.5	9.7	6.9	11.0	1.9	10.8	10.3	8.6	9.1	3.0	13.9	12.7	10.8	9.6
No rules	14.1	0.0	0.0	0.0	0.0	10.4	1.5	0.4	0.0	0.0	13.7	0.4	0.0	0.0	0.0
Not sure	0.5	0.0	0.0	0.0	0.0	0.3	0.0	0.0	0.1	0.4	0.3	0.0	0.0	1.0	1.2

Q 2. Which statement best describes the rules about smoking in your family vehicle or vehicles?

	Clinton					Essex					Franklin				
	2003	2006	2007	2009	2011	2003	2006	2007	2009	2011	2003	2006	2007	2009	2011
Not allowed	67.6	76.2	78.8	77.6	78.8	71.0	73.3	82.0	77.5	74.8	65.3	67.0	74.6	71.5	68.4
Some times	15.6	15.7	8.8	11.0	12.0	17.0	11.1	4.7	9.8	15.2	17.4	13.8	6.5	15.6	18.6
Allowed in all	12.7	6.9	10.9	10.0	6.2	9.6	12.2	11.4	10.8	6.8	13.8	16.9	15.7	9.6	7.3
No vehicle	3.0	1.2	0.8	1.4	3.1	1.2	1.3	1.5	2.0	3.0	0.9	1.9	2.1	3.3	5.6
Not sure	1.0	0	0.7	0.0	0.0	1.2	2.1	0.4	0.0	0.2	2.7	.4	1.1	0.0	0.1

In each county those that currently smoke are far more likely to allow smoking anywhere in their homes, some places in their home or in their vehicles than those that do not smoke. Former smokers do not allow smoking in either their homes or cars at rates approaching 80% in all three counties. Thirty-nine percent of smokers in Clinton, 47% in Franklin and only 34% in Essex indicate that they do not allow smoking in their home and 39% or fewer smokers say that smoking is not allowed in any of their vehicles. While it is true that large numbers of smokers have restricted smoking both at home and in their vehicles, it is still apparent that for many smokers, those rules do not exist.

Renting and Limiting Smoking in Rental Units

Small percentages of respondents in the three counties rent rather than own their dwelling. As such, the margin of error of their responses is quite high. Still, we report that in Essex of the 17% of respondents that rent, 66%, down from 78%, say there is no policy that governs smoking in their dwelling. In Clinton of the 13% that rent, 91%, up from 85%, report that there is no policy and in Franklin, of the renter population of 24%, 78%, up from 60%, report no policy. It appears that those that advocate for smoke-free dwellings need to pursue the development of and then implementation of smoking policies in rental dwellings.

Q 3. Do you rent or own your home?

	Clinton			Essex			Franklin		
	2008	2009	2011	2008	2009	2011	2008	2009	2011
Rent	24.7	14.5	13.3	18.1	17.5	17.1	22.6	16.4	24.1
Own	68.3	83.3	83.0	77.8	82.1	79.9	73.6	79.4	73.5
Neither/no response	7.0	2.3	3.6	4.2	0.3	3.0	3.9	4.1	2.4

Q 4. (If rent) How many units are there in your building?

	Clinton			Essex			Franklin		
	2008	2009	2011	2008	2009	2011	2008	2009	2011
1-3	60.2	70.8	49.2	52.3	59.7	86.4	53.8	57.3	65.7
4 or more	39.8	27.3	37.6	47.7	34.5	10.1	46.2	38.7	25.1
Don't know/Refused	N/A	1.9	13.2	N/A	5.8	3.6	N/A	4.0	9.2

Q 5. (If rent) Is there a policy or a section in your lease that restricts indoor smoking in your building (including inside apartments)?

	Clinton			Essex			Franklin		
	2008	2009	2011	2008	2009	2011	2008	2009	2011
Smoking is prohibited anywhere	2.9	2.1	2.2	11.3	9.7	12.6	15.6	23.3	12.5
Smoking is restricted to certain areas	12.5	12.7	5.3	18.2	3.2	14.4	26.7	6.6	6.3
There is no policy	73.2	85.2	90.8	43.8	77.7	65.8	44.5	60.2	77.7
Don't Know/Not Sure/Refused	11.5	0.0	1.7	26.7	9.3	7.2	13.2	9.9	3.5

Among renters living in dwellings without a policy we see a change in favor or support for smoke-free policies since the 2008 survey but a decline since the 2009 survey. Still, we note that the sample size is quite small in each case. Still, among these small samples (between 35 and 50 respondents) a majority favor some sort of policy.

When those that rent and currently do not have a non-smoking policy in place were asked whether or not they favor a smoke-free building that would mean that smoking is prohibited in all indoor areas including rental units, respondents in Essex were strongly in favor, 75 to 24% but more evenly divided in both Clinton, 55 to 42% and in Franklin, 58 to 37%.

Q 6. (If rent and no policy) Would you be in favor of a smoke-free policy in your building?

	Clinton			Essex			Franklin		
	2008	2009	2011	2008	2009	2011	2008	2009	2011
Yes, I would favor a policy that prohibits smoking everywhere.	16.9	55.9	35.4	17.6	43.3	37.7	22.9	40.6	37.8
Yes, I would favor a policy that restricts smoking to certain areas	23.0	15.7	19.9	33.1	15.2	36.6	24.8	20.0	19.5
No, I would not favor a smoking policy	41.1	24.5	42.1	35.2	33.0	24.2	40.7	39.4	37.0
Don't Know/Not Sure/Refused	19.0	3.9	2.7	14.1	8.5	1.5	11.6	0.0	5.6

Attitudes towards Legislation

Respondents in each county were asked whether they would support a law similar to one in California that awards a traffic citation to anyone smoking in a vehicle in which a minor is present. The infraction can only result from being stopped for some other offense and is punishable by a fine of \$100.

Support for this potential law tended to be a solid majority and relatively consistently split across the three counties. In each case between 52% and 57% of all respondents in each county said they supported the proposal. Five percent or fewer felt it was too lenient. Adding them together those that support it with those that would seemingly support a more stringent penalty or enforcement procedure well more than half (Clinton 63%, Essex 54% and Franklin 56%) support some form of law governing smoking in vehicles with minors. Still, 36% to 45% feel that this proposal is too severe and can then be legitimately seen as opposing it.

Q 8. In California, smoking in a vehicle if someone under 18 is present, is a traffic infraction punishable by a fine of \$100. But the traffic stop has to be made for another offense, such as speeding or an illegal turn, before the driver can be cited for smoking. Would you support such a law for New York?

	Clinton		Essex		Franklin	
	2009	2011	2009	2011	2009	2011
Yes, I would support it	54.7	56.6	53.6	51.7	52.1	54.8
No, it is too lenient	0.5	5.5	0.8	1.6	3.0	1.4
No, it is too severe	42.0	36.4	43.6	44.6	41.0	41.8
Don't know/Not sure	2.8	1.5	2.0	2.1	4.0	1.9

Support for the proposal is greatest among non-smokers. Support is higher (approaching 69% in Franklin among those that never smoked) among those that never smoked as compared with those that smoked in the past. Opposition to the proposal understood as those that say it is too severe is greatest among smokers and does, among smokers, range from 46% opposed in Clinton to 63% in Franklin and 77% in Essex.

The findings here must be understood against the back drop of this particular question. It is reasonable to believe that some respondents reacted to the situation, that is, being stopped for a broken tail light, and receiving a fine for smoking. Some might find the enforcement intrusive and be responding to that rather than the act of smoking with a minor present in the vehicle. Nonetheless, support for this type of legislation although more vigorously opposed by smokers, appears to have dubiously sufficient strength necessary for enactment in these three counties.

Q 7. Do you favor or oppose an expansion of the current clean indoor air law to include any of the following environments?

Public parks and outdoor recreation areas?

	Clinton					Essex					Franklin				
	2006	2007	2008	2009	2011	2006	2007	2008	2009	2011	2006	2007	2007	2009	2011
Favor	51.6	50.5	66.1	58.9	57.0	40.5	51.1	63.1	57.6	53.0	46.5	52.1	55.7	53.5	56.8
Oppose	43.1	43.9	31.4	36.8	37.9	50.1	39.5	34.2	38.6	42.4	49.8	44.1	41.2	42.4	38.1
No opinion	5.3	5.6	2.6	4.3	5.1	9.4	9.4	2.7	3.8	4.6	3.7	3.6	3.1	4.1	5.1

Public beaches?

	Clinton					Essex					Franklin				
	2006	2007	2008	2009	2011	2006	2007	2008	2009	2011	2006	2007	2007	2009	2011
Favor	52.1	55.6	68.8	61.2	66.4	46.7	56.6	65.9	60.3	58.5	52.1	55.1	57.5	63.1	62.6
Oppose	43.1	40.0	29.4	34.3	27.2	45.4	36.9	31.3	35.4	38.3	42.5	40.9	40.1	34.0	32.0
No opinion	4.8	4.4	1.8	4.6	6.4	7.9	6.5	2.7	4.4	3.3	5.4	4.1	2.5	2.9	5.4

Areas around building entry ways?

	Clinton					Essex					Franklin				
	2006	2007	2008	2009	2011	2006	2007	2008	2009	2011	2006	2007	2007	2009	2011
Favor	73.1	72.6	78.8	80.3	76.2	62.3	72.8	75.8	70.1	67.3	67.7	69.4	66.4	72.1	70.3
Oppose	22.7	26.2	19.8	17.7	20.9	32.7	24.8	23.3	28.7	31.3	30.7	27.6	30.1	23.7	27.5
No opinion	4.2	1.2	1.4	2.0	3.0	5.0	2.4	1.0	1.3	1.4	1.6	3.1	3.4	4.2	2.2

Playgrounds?

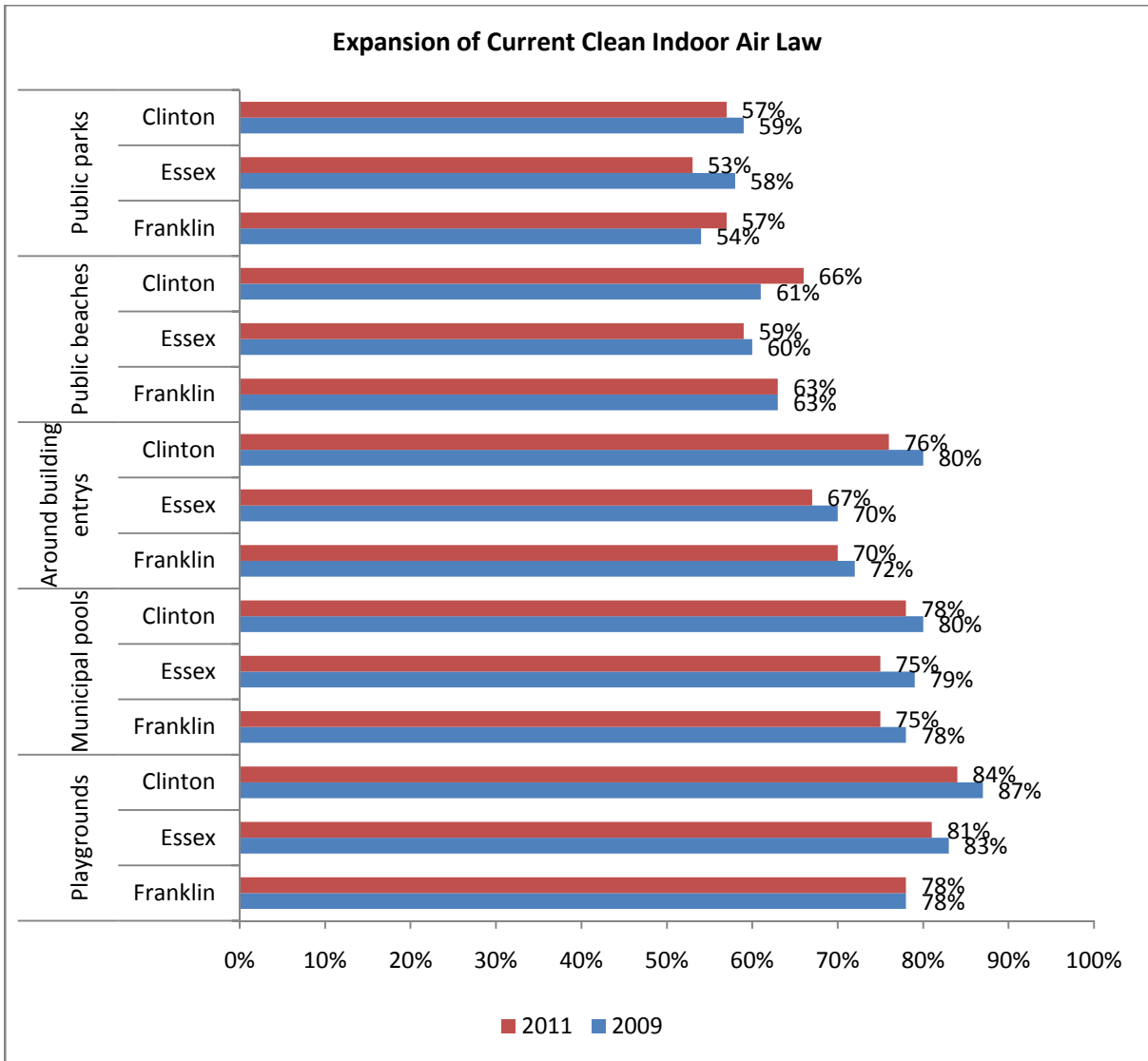
	Clinton					Essex					Franklin				
	2006	2007	2008	2009	2011	2006	2007	2008	2009	2011	2006	2007	2007	2009	2011
Favor		78.3	86.7	87.0	83.8		85.6	84.7	83.0	81.0		83.3	77.6	77.8	77.9
Oppose		19.4	10.5	11.9	14.7		11.9	14.0	15.6	17.8		15.7	19.8	19.3	18.6
No opinion		2.4	2.8	1.2	1.5		2.5	1.3	1.4	1.2		0.1	2.6	2.9	3.6

Municipal pools?

	Clinton					Essex					Franklin				
	2006	2007	2008	2009	2011	2006	2007	2008	2009	2011	2006	2007	2007	2009	2011
Favor				80.1	77.8				78.8	74.6				77.9	74.7
Oppose				16.7	20.4				18.9	23.5				18.5	20.6
No opinion				3.1	1.8				2.3	1.8				3.5	4.7

Support is high, consistent and ranked for an expansion of the current clean indoor air law among respondents across the three counties to the following areas: Playgrounds, Municipal pools, Entryways, Public beaches and Public parks. Support is highest for the expansion of the law for playgrounds followed in descending order by pools, entryways, beaches and parks.

Support is not only weakest for expanding the law to public parks and outdoor recreation areas but is actually strongly opposed by smokers in all three counties. Smokers in only Clinton by a small majority oppose the expansion being applied to beaches. All respondents regardless of demographics and smoking behavior support an expansion of the act to apply to playgrounds, pools and entryways.



Selling Tobacco Products

We see a clear ranking of where respondents think tobacco products should be sold, when looking at the average rates of support across the three counties, with gas stations and convenience stores gaining support as tobacco retailing locations at 71% to 76% rates. Only a small majority believe tobacco should be sold at grocery stores, a venue that all households must frequent and is often frequented by children. Pharmacies receive only 32%, up from 22%, that support sales of tobacco products. These numbers dovetail not only with the views expressed in the support or opposition to advertising but also with the buying behavior of smokers. In general, the public see and accept convenience stores and gas stations as the appropriate location for tobacco commerce except when those stores are located close to where children are.

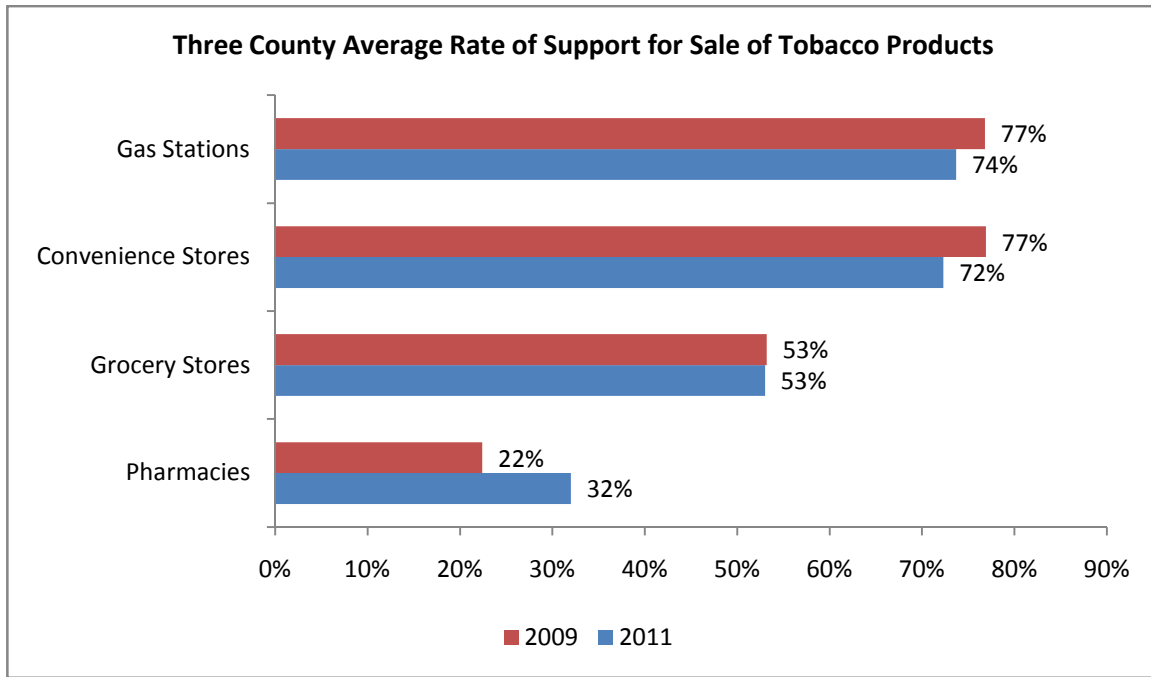
Q 13. Do you think that the following types of stores should or should not sell tobacco products? (cigarettes, cigars, etc.)

<i>Grocery stores?</i>	Clinton		Essex		Franklin	
	2009	2011	2009	2011	2009	2011
Should	49.2	50.2	55.1	58.0	55.3	50.8
Should not	47.1	48.3	41.9	40.5	43.5	45.3
Don't know	3.7	1.5	3.0	1.5	1.2	3.9

<i>Pharmacies?</i>	Clinton		Essex		Franklin	
	2009	2011	2009	2011	2009	2011
Should	22.9	28.5	29.3	30.1	30.7	38.2
Should not	77.1	67.8	67.6	69.2	69.3	58.5
Don't know	0.0	3.8	3.1	0.6	0.0	3.2

<i>Convenience stores?</i>	Clinton		Essex		Franklin	
	2009	2011	2009	2011	2009	2011
Should	77.5	71.1	75.5	75.3	77.8	70.8
Should not	20.8	27.0	21.9	22.6	20.0	26.1
Don't know	1.8	1.9	2.6	2.1	2.2	3.1

<i>Gas stations?</i>	Clinton		Essex		Franklin	
	2009	2011	2009	2011	2009	2011
Should	76.4	73.7	75.0	75.5	79.1	71.1
Should not	21.8	23.7	22.8	22.7	19.6	25.7
Don't know	1.8	2.6	2.2	1.8	1.3	3.2



Q 17. What is your opinion about a regulation that would ban the sale of all tobacco products in pharmacies?

	Clinton	Essex	Franklin
Strongly in favor	47.5	40.3	37.8
Somewhat in favor	14.4	12.2	14.7
Neither in favor or against	11.6	13.8	14.5
Somewhat against	11.5	10.6	15.2
Strongly against	15.0	22.7	17.3
Don't know/Refused	0.0	0.3	0.4

We asked respondents a more stringent question about the sale of tobacco products in pharmacies. While only an average of 32% of respondents across the three counties think tobacco products should be sold in pharmacies, 38% in Franklin, 30% in Essex and 28% in Clinton, an average of only 56% across the three counties is either somewhat or strongly in favor of a regulation that would ban the sale of all tobacco products in pharmacies.

As we have seen in other instances, despite overwhelming sentiment in opposition to, in this case, the sale of tobacco products in pharmacies, respondents are more reluctant to support legislation that would enforce that sentiment. Still, with a majority at least somewhat in favor and in each county at least twice as many strongly in favor as compared to those strongly opposed, it does appear possible to move this initiative forward.

Respondents offer less support for a regulation that would limit the number of stores that could sell tobacco in their community than they had for regulating the sale in pharmacies. Support falls from over 50% to 48% in Clinton, 40% in Franklin and only 36% in Essex. In both Essex

and Franklin, opposition to this regulation limiting the number of stores that could sell tobacco is equal to or greater than opposition.

Q 14. What is your opinion about a regulation that would limit the number of stores that could sell tobacco in your community?

	Clinton	Essex	Franklin
Strongly in favor	28.6	19.5	25.3
Somewhat in favor	19.5	16.5	15.1
Neither in favor or against	18.1	19.6	22.7
Somewhat against	11.3	18.8	13.2
Strongly against	21.9	25.0	22.1
Don't know/Refused	0.6	0.7	1.5

Still, when the issue of selling tobacco in proximity to schools is introduced, respondents offer more support for forbidding its sale and instituting a ban.

Q 15. Do you think tobacco products should or should not be sold in stores that are located near schools?

	Clinton	Essex	Franklin
Should	24.2	30.9	25.0
Should not	69.9	63.4	69.9
Don't know/Refused	5.9	5.7	5.2

No more than 31% believe that tobacco should be sold in stores that are located near schools. This is less support than even the percentage that supported the sale of tobacco products in pharmacies.

In two of the three counties, Clinton and Franklin, a strong majority are in favor of a regulation that would ban the sale of tobacco products in stores that are located near schools. Only about ¼ to about 37% oppose this ban.

Q 16. What is your opinion about a regulation that would ban the sale of tobacco products in stores that are located near schools?

	Clinton	Essex	Franklin
Strongly in favor	45.9	34.7	37.8
Somewhat in favor	13.5	14.3	19.9
Neither in favor or against	13.0	12.9	14.1
Somewhat against	10.5	12.8	13.6
Strongly against	16.8	24.8	13.6
Don't know/Refused	0.3	0.6	0.9

Interestingly, requiring tobacco retailers to keep their products out of customer's view receives significant support across the three counties. It is likely that respondents see this as a sensible middle ground that protects consumers, especially young consumers while still respecting the rights of smokers and retailers.

Only 20 to 24% oppose this "kept from view" regulation while between 56 and 62% support it.

Q 13. Other countries, such as Canada, require tobacco retailers to keep their products out of customers view. What is your opinion about a similar requirement in New York State that would require tobacco products to be kept out of view in stores?

	Clinton	Essex	Franklin
Strongly in favor	43.5	31.7	40.8
Somewhat in favor	18.2	24.4	21.5
Neither in favor or against	15.1	19.5	17.6
Somewhat against	10.4	9.7	9.4
Strongly against	12.5	14.5	10.8
Don't know/Refused	0.3	0.3	0.0

Clearly, respondents in these three counties see cigarettes displayed when they visit retail locations. In each county, at least 35% say they see cigarettes displayed almost every time they were in a store. Only about 20% say they either never see cigarettes or cannot remember. Aside from support for a Canadian-style regulation requiring cigarettes to be kept out of view, a majority of respondents normatively agree, tobacco products should not be visible in stores. Given this level of support, it is worthwhile to lobby for and pursue the regulation that would alter the display of cigarettes in stores. Interestingly, even a majority of smokers in two of the three counties, Clinton and Franklin, support the Canadian regulation.

Q 11. Over the past 30 days, how often did you notice packs of cigarettes or cigars visible behind the cash register or in other areas of stores? Would you say....

	Clinton	Essex	Franklin
Almost every time you were in a store	42.4	38.6	34.9
Frequently when you were in a store	17.8	21.4	20.8
Occasionally when you were in a store	19.0	21.2	22
Never/not that I remember	18.8	17.7	19.7
Have not visited a store in the past 30 days	0.6	0.6	1.6
Don't know/Refused	1.4	0.4	1.1

Q 12. Do you think tobacco products should or should not be visible in stores?

	Clinton 2011	Essex 2011	Franklin 2011
Should	38.6	40.5	39.8
Should not	55	51.7	55.2
Don't know/Refused	6.5	7.8	5.1

Teen Smoking

Q 18. I'm going to read you a series of statements about teens and smoking, for each tell me whether you strongly agree, somewhat agree, neither agree nor disagree, somewhat disagree or strongly disagree:

Teen smoking is a significant problem in our community.

	Clinton	Essex	Franklin
Strongly agree	44.1	44.5	48.7
Somewhat agree	25.1	25.1	27.8
Neither agree nor disagree	6.7	5.4	4.2
Somewhat disagree	13.0	13.5	11.4
Strongly disagree	8.1	8.6	5.0
Don't know/Refused	3.0	2.9	3.0

Advertising in local stores make teens more likely to smoke.

	Clinton	Essex	Franklin
Strongly agree	34.5	25.0	30.8
Somewhat agree	24.3	29.2	28.4
Neither agree nor disagree	5.3	6.0	7.6
Somewhat disagree	17.0	18.4	20.1
Strongly disagree	17.7	21.1	13.1
Don't know/Refused	1.2	0.4	0.1

Tobacco products that are visible in stores make teens more likely to smoke.

	Clinton	Essex	Franklin
Strongly agree	36.5	28.1	30.3
Somewhat agree	24.4	20.4	25.2
Neither agree nor disagree	3.7	4.7	5.8
Somewhat disagree	15.8	18.7	18.8
Strongly disagree	18.8	27.6	19.6
Don't know/Refused	0.7	0.5	0.2

Teens would smoke less if tobacco products were not visible in stores.

	Clinton	Essex	Franklin
Strongly agree	27.3	17.7	27.5
Somewhat agree	24.0	28.6	28.2
Neither agree nor disagree	7.8	8.3	5.3
Somewhat disagree	16.6	14.2	19.1
Strongly disagree	23.6	30.5	18.8
Don't know/Refused	0.7	0.7	1.1

Teens are more likely to smoke if they see smoking in the movies.

	Clinton	Essex	Franklin
Strongly agree	36.8	30.2	32.8
Somewhat agree	31.2	30.2	30.6
Neither agree nor disagree	7.2	7.2	7.3
Somewhat disagree	7.6	9.8	14.4
Strongly disagree	16.5	22.1	14.4
Don't know/Refused	0.7	0.4	0.4

Most teens start smoking because they think it is cool.

	Clinton	Essex	Franklin
Strongly agree	65.7	63.9	65.1
Somewhat agree	25.0	25.1	25.4
Neither agree nor disagree	2.0	2.1	1.9
Somewhat disagree	3.9	5.1	3.1
Strongly disagree	2.7	3.7	4.3
Don't know/Refused	0.8	0.1	0.2

Teens start to smoke because they have access to cheap cigarettes.

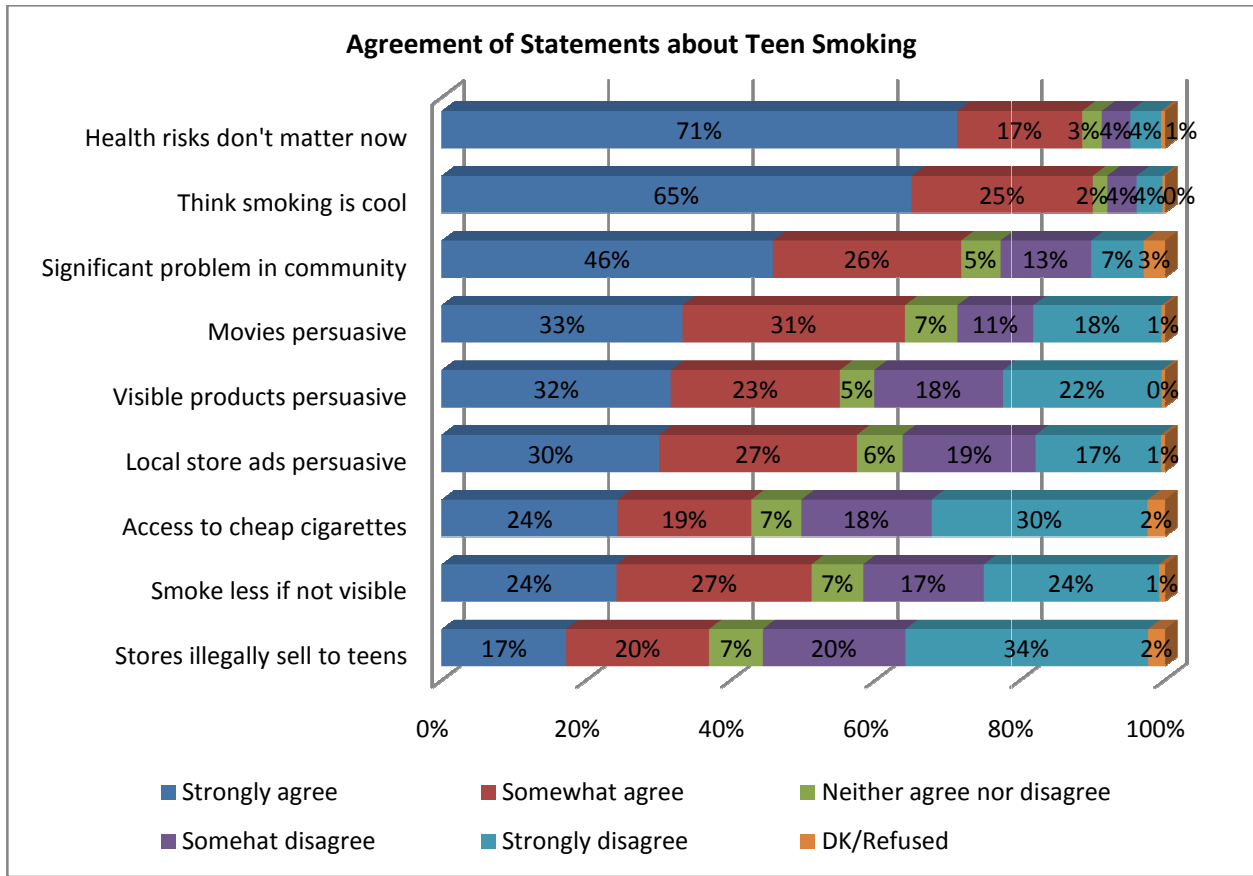
	Clinton	Essex	Franklin
Strongly agree	26.9	18.8	27.2
Somewhat agree	16.6	16.0	22.9
Neither agree nor disagree	7.4	5.6	7.7
Somewhat disagree	20.4	18.1	15.5
Strongly disagree	26.9	38.1	24.7
Don't know/Refused	1.8	3.5	2.0

Teens start to smoke because they live near stores that illegally sell cigarettes to teens.

	Clinton	Essex	Franklin
Strongly agree	20.9	12.9	17.9
Somewhat agree	17.8	20.0	21.3
Neither agree nor disagree	10.0	6.5	5.8
Somewhat disagree	21.0	20.1	17.9
Strongly disagree	27.7	39.2	33.8
Don't know/Refused	2.5	1.3	3.3

While teens acknowledge that smoking is a health risk, they don't think the risk matters to them right now.

	Clinton	Essex	Franklin
Strongly agree	75.3	68.3	69.9
Somewhat agree	13.5	21.7	17.0
Neither agree nor disagree	3.0	2.0	3.1
Somewhat disagree	4.7	2.9	4.2
Strongly disagree	3.1	4.8	4.8
Don't know/Refused	0.4	0.3	1.0



This year, nine statements about teen smoking were added to the survey. Above we show the mean of agreement and disagreement across the three counties for these nine statements.

Seventy-two percent of respondents agree that teen smoking is a significant problem in their community. Forty-six percent agree strongly and 26% somewhat agree. This establishes a strong starting point for this conversation.

Respondents do agree strongly that teens acknowledge that smoking is a health risk; they don't think the risk matters to them right now. This belief that teens do not see the urgency of the impact of smoking on them is widely held.

Similarly, respondents agree that they believe teens start to smoke because they think it is cool and that they are more likely to smoke if they see smoking in the movies. These cultural assessments are widely held and clearly difficult to address.

As far as advertising and cigarette visibility, a majority of respondents do agree that advertising in local stores makes teens more likely to smoke, that tobacco product visibility makes teens more likely to smoke and that teens would smoke less if tobacco products were not visible in stores.

These majority opinions continue to lend credence to the efforts to regulate the advertising and exposure of cigarettes. Still, it is noteworthy that the causal impact of cigarette visibility is only weakly held.

Demographics

Q 33. Which one of the following best describes your race? (Options read: White, Black or African American, Hispanic, Asian, Native Hawaiian or Other Pacific Islander, American Indian, Alaska Native, Other, No additional choices, Don't know/Not sure)

	Clinton					Essex					Franklin				
	2006	2007	2008	2009	2011	2006	2007	2008	2009	2011	2006	2007	2008	2009	2011
White	97.2	95.5	98.3	92.9	95.1	96.4	96.3	93.4	96.2	97.2	87.7	89.0	92.2	92.2	90.9
Black	1.8	2.4	0.2	2.7	1.0	0.4	0.2	1.3	0.5	0.0	0.6	0.0	0.6	0.0	0.0
Hispanic	0.2	1.0	0.3	0.3	0.1	0.0	0.8	0.3	0.4	0.2	0.5	0.0	0.8	0.5	0.4
Asian	0.0	0.1	0.7	0.7	0.4	0.0	0.9	0.0	0.0	0.0	0.0	1.0	1.0	0.5	0.0
Native Hawaiian	0.0	0.0	0.0	0.0	0.0	0.0	0.0	0.0	0.0	0.0	0.3	1.0	0.2	0.7	0.0
American Indian	0.2	0.6	0.4	0.7	0.6	0.4	0.0	3.8	0.5	0.5	9.7	7.0	4.6	5.0	6.5
Other – mixed	0.0	0.2	0.0	0.7	0.6	0.9	1.4	0.5	0.0	1.3	0.0	0.5	0.1	0.6	1.7
Not sure/Refused	0.0	0.2	0.1	1.9	2.3	0.8	0.4	0.7	2.4	0.8	0.1	1.7	0.4	0.4	0.5

Q 34. What is the highest grade or year of school you completed?

	Clinton					Essex					Franklin				
	2006	2007	2008	2009	2011	2006	2007	2008	2009	2011	2006	2007	2008	2009	2011
Grades 1-8 (Elementary)	0.3	1.2	0.6	1.6	1.5	0.4	2.2	0.4	0.6	0.6	1.5	3.2	1.1	1.1	1.8
Grades 9-11 (some HS)	3.2	3.5	6.1	2.4	6.9	2.1	5.6	5.8	2.6	7.2	5.1	4.4	3.7	5.4	4.6
High school grad/ GED	26.4	33.4	24.3	25.2	28.5	20.9	27.5	26.7	22.7	26.6	27.3	34.5	34.5	22.3	29.4
Some college	34.2	23.2	29.8	29.5	30.6	27.3	26.8	24.9	30.4	30.6	30.9	23.1	28.7	34.6	33.0
Bachelor's Degree	20.5	26.4	25.5	24.7	18.6	28.6	20.3	26.9	25.1	19.6	19.4	20.8	24.1	24.5	18.3
Postgraduate Degree	15.4	12.3	13.0	15.8	13.3	20.5	17.6	15.4	17.6	14.5	15.9	13.9	7.9	12.1	12.7
Refused	N/A	N/A	N/A	0.8	0.6	N/A	N/A	N/A	1.1	0.9	N/A	N/A	N/A	0.0	0.2

Q 35. Bearing in mind that this is completely confidential, please tell me the category that best describes your yearly household income.

	Clinton					Essex					Franklin				
	2006	2007	2008	2009	2011	2006	2007	2008	2009	2011	2006	2007	2008	2009	2011
Under \$25,000	9.2	10.6	17.0	12.3	16.9	9.8	15.0	18.8	12.0	16.2	20.6	14.8	17.3	18.1	25.9
\$25,000- 49,000	25.3	18.7	19.7	20.4	21.0	21.6	24.2	20.4	30.2	22.6	23.1	23.8	18.9	25.7	22.9
\$50,000- 74,000	29.0	30.4	21.1	26.9	18.1	25.4	22.2	20.4	15.8	21.8	19.4	27.2	28.5	20.8	20.0
\$75,000- 99,000	11.7	12.4	10.7	15.5	17.7	14.5	13.9	11.8	13.0	13.5	14.2	12.4	10.8	14.3	7.7
\$100,000- 150,000	9.7	10.3	10.5	11.2	15.7	10.6	6.6	6.5	14.0	8.4	4.3	6.2	3.2	6.5	12.5
Over \$150,000	2.9	4.9	1.2	5.6	5.3	4.1	6.3	1.9	4.1	6.9	2.4	0.8	0.4	5.1	2.1
Don't know	5.8	5.5	12.0	2.6	0.3	1.6	4.3	6.1	2.3	2.0	2.7	5.5	9.6	4.6	2.8
Refused	6.4	7.3	7.9	5.5	5.2	12.4	7.6	14.3	8.5	8.7	13.4	9.3	11.2	5.0	6.1

Q 32. How many children live in your household who are younger than 18 years old?

	Clinton		Essex		Franklin	
	2009	2011	2009	2011	2009	2011
None	54.6	59.2	61.3	63.0	59.2	58.5
One or more	44.8	40.2	38.0	37.0	40.9	40.6
Don't know/Refused	0.5	0.6	0.8	0.0	0.0	0.9

Survey Procedures and Samples Derived

The calling was conducted May 2 – 16, 2011. Calls were made during the hours of 11:00 am – 9:00 pm on the days specified. Within each county, a random sample of RDD telephone numbers obtained from Survey Sampling Inc was used. The random sample was used to ensure representativeness and coverage. Telephone numbers were used to maximize access to residents of the county.

The final completed interviews were weighted by age and sex so as to match the obtained sample to the known demographics of each county. Weighting is a common and accepted practice within public opinion research and in this type of study.

In each case given sample sizes of 350 in Clinton, 350 in Essex and 350 in Franklin, we report the findings with a margin of error of +/- 5.2% at the 95% confidence level.

Comparison of County Residents and Each County Sample, After Weighting

<i>Sex</i>	Clinton		Essex		Franklin	
	Pop	Samp	Pop	Samp	Pop	Samp
Female	49.0	49.0	47.6	47.6	45.3	45.3
Male	51.0	51.0	52.4	52.4	54.7	54.7
<i>Age</i>						
18 – 29	26.6	26.2	20.2	19.8	23.1	22.7
30 – 44	26.1	25.6	25.3	24.7	27.9	27.5
45 – 59	25.6	25.2	27.4	26.7	26.5	26.1
60 plus	21.7	21.3	27.1	26.5	22.6	22.3

Note: in calculating the population distribution within each county, those under 18 were excluded from the calculations. The resulting percentages are of those 18 and older within each county.

Survey Script

Hello, my name is ___ and I'm calling from _____. We aren't selling anything, but we are doing a survey about health related issues.

Would you be willing to participate in a survey about health -related issues? Participation is, of course, voluntary. You can choose to not answer some questions and you can quit whenever you wish. All information is confidential. It will take 6-7 minutes.

(If people ask who is conducting the survey, indicate it is for the local Tobacco-Free Coalition).

First, I'd like to ask you a few questions about the smoking rules in your home and in your vehicle.

1. Which statement best describes the rules about smoking in your home? **(read alternatives)**

1. ____ Smoking is not allowed anywhere inside the home
2. ____ Smoking is allowed in some places or at some times
3. ____ Smoking is allowed anywhere inside the home
4. ____ Don't know/not sure

2. Which statement best describes the rules about smoking in your family vehicle or vehicles? **(read alternatives)**

1. ____ Smoking is not allowed in any vehicle
2. ____ Smoking is allowed some times or in some vehicles
3. ____ Smoking is allowed in all vehicles
4. ____ Do not have a family vehicle
5. ____ Don't know/not sure

3. Do you rent or own your home?

1. ____ rent a single family home
2. ____ rent an apartment
3. ____ own (skip to Q8)
4. ____ neither (skip to Q8)
5. ____ Refused

4. How many units are there in your building?

1. ____ 1-3
2. ____ 4 or more

5. Is there a policy or a section in your lease that restricts indoor smoking in your building (including inside apartments)?

1. ____ yes, smoking is prohibited everywhere (skip to Q8)
2. ____ yes, smoking is restricted to certain areas
3. ____ no, there is no policy
4. ____ don't know/not sure

6. Would you be in favor of a smoke-free policy in your building?

1. ____ yes, I would favor a policy that prohibits smoking everywhere.
2. ____ yes, I would favor a policy that restricts smoking to certain areas
3. ____ no, I would not favor a smoking policy
4. ____ don't know/ not sure

7. Would you prefer a smoke-free building, which means smoking is prohibited in all indoor areas, including rental units?

1. ____ yes
2. ____ no
3. ____ doesn't matter/no preference

8. Do you favor or oppose an expansion of the current clean indoor air law to include any of the following environments?

- | | | | |
|--|--------------|---------------|-----------------------------|
| a. Public parks and outdoor recreation areas | 1 ____ favor | 2 ____ oppose | 3 ____ don't know/not sure |
| b. Public beaches | 1 ____ favor | 2 ____ oppose | 3 ____ don't know/ not sure |
| c. Areas around building entry ways | 1 ____ favor | 2 ____ oppose | 3 ____ don't know/ not sure |
| d. Municipal pools | 1 ____ favor | 2 ____ oppose | 3 ____ don't know/ not sure |
| e. Playgrounds | 1 ____ favor | 2 ____ oppose | 3 ____ don't know/ not sure |

9. In California, smoking in a vehicle if someone under 18 is present, is a traffic infraction punishable by a fine of \$100. But the traffic stop has to be made for another offense, such as speeding or an illegal turn, before the driver can be cited for smoking. Would you support such a law for New York?

1. ____ yes, I would support it.
2. ____ no, it is too lenient.
3. ____ no it is too severe
4. ____ don't know/not sure

10. Do you think that the following types of stores should or should not sell tobacco products (cigarettes, cigars, etc)

- | | | | |
|--|-----------------|---------------------|----------------|
| a. Grocery stores?
know/no opinion | 1. _____ should | 2. _____ should not | 3. _____ don't |
| b. Pharmacies
know/no opinion | 1. _____ should | 2. _____ should not | 3. _____ don't |
| c. Convenience Stores
know/no opinion | 1. _____ should | 2. _____ should not | 3. _____ don't |
| d. Gas Stations
know/no opinion | 1. _____ should | 2. _____ should not | 3. _____ don't |

11. Over the past 30 days, how often did you notice packs of cigarettes or cigars visible behind the cash register or in other areas of stores? Would you say....

- 1 Almost every time you were in a store
- 2 Frequently when you were in a store
- 3 Occasionally when you were in a store
- 4 Never/not that I remember
- 5 I HAVE NOT VISITED A STORE IN THE PAST 30 DAYS
- 6 DON'T KNOW
- 7 REFUSED

12. Do you think tobacco products should or should not be visible in stores?

- 1 Should
- 2 Should Not
- 3 DON'T KNOW
- 4 REFUSED

13. Other countries, such as Canada, require tobacco retailers to keep their products out of customers view. What is your opinion about a similar requirement in New York State that would require tobacco products to be kept out of view in stores?

- 1 Strongly in favor
- 2 Somewhat in favor
- 3 Neither in favor nor against
- 4 Somewhat against
- 5 Strongly against
- 6 DON'T KNOW
- 7 REFUSED

14. What is your opinion about a regulation that would limit the number of stores that could sell tobacco in your community?

- 1 Strongly in favor
- 2 Somewhat in favor
- 3 Neither in favor nor against
- 4 Somewhat against
- 5 Strongly against
- 6 DON'T KNOW
- 7 REFUSED

15. Do you think tobacco products should or should not be sold in stores that are located near schools?

- 1 Should
- 2 Should Not
- 3 DON'T KNOW
- 4 REFUSED

16. What is your opinion about a regulation that would ban the sale of tobacco products in stores that are located near schools?

- 1 Strongly in favor
- 2 Somewhat in favor
- 3 Neither in favor nor against
- 4 Somewhat against
- 5 Strongly against
- 6 DON'T KNOW
- 7 REFUSED

17. What is your opinion about a regulation that would ban the sale of all tobacco products in pharmacies?

Are you..

- 1 Strongly in favor
- 2 Somewhat in favor
- 3 Neither in favor or against
- 4 Somewhat against
- 5 Strongly against
- 6 DON'T KNOW
- 7 REFUSED

18. I'm going to read you a series of statements about teens and smoking, for each tell me whether you strongly agree, somewhat agree, neither agree nor disagree, somewhat disagree or strongly disagree:

- a. Teen smoking is a significant problem in our community
- b. Advertising in local stores make teens more likely to smoke
- c. Tobacco products that are visible in stores make teens more likely to smoke.
- d. Teens would smoke less if tobacco products were not visible in stores.
- e. Teens are more likely to smoke if they see smoking in the movies.
- f. Most teens start smoking because they think it is cool
- g. Teens start to smoke because they have access to cheap cigarettes
- h. Teens start to smoke because they live near stores that illegally sell cigarettes to teens.
- i. While teens acknowledge that smoking is a health risk, they don't think the risk matters to them right now.

Now we have just a few questions about tobacco use.

19. Have you smoked at least 100 cigarettes in your entire life?

1. ____ Yes
2. ____ No (skip to Q24)
3. ____ Don't know

20. Do you now smoke cigarettes everyday, some days, or not at all?

1. ____ Everyday
2. ____ Some days
3. ____ Not at all (skip to Q24)
4. ____ Don't know

21. During the past 12 months have any healthcare providers advised you to stop smoking? (**read each**)

a. Doctor, nurse, physician assistant, or clinic staff

1 ____ Yes 2 ____ No 3 ____ Did not see healthcare provider

b. Dentist or Dental Hygienist

1 ____ Yes 2 ____ No 3 ____ Did not see dentist

22. During the past 12 months have any of the following other groups advised you to stop smoking? (**read each**)

a. Substance Abuse Counselor

1 ____ Yes 2 ____ No 3 ____ Did not see counselor

b. Mental Health Counselor

1 ____ Yes 2 ____ No 3 ____ Did not see counselor

c. Family, children, spouse, parents

1 ____ Yes 2 ____ No 3 ____ N/A

23. Where do you purchase your cigarettes most of the time?

1. ____ Grocery stores
2. ____ Pharmacies
3. ____ Convenience Stores
4. ____ Gas Stations
5. ____ Indian Reservations
6. ____ Internet
7. ____ Other [**Please specify**] _____

24. (**Ask of all**) Do you currently use any other tobacco products? 1 ____ Yes 2 ____ No (skip to Q27)

25. If yes, do you use?

- | | | | | |
|--|---------------|---------------|---------------|-----------|
| a. Cigars:
know/Refused | 1 __Every day | 2 __Some days | 3 _Not at all | 4__ Don't |
| b. Pipes:
know/Refused | 1 __Every day | 2 __Some days | 3 _Not at all | 4__ Don't |
| c. Chew:
know/Refused | 1 __Every day | 2 __Some days | 3 _Not at all | 4__ Don't |
| d. Snuff:
know/Refused | 1 __Every day | 2 __Some days | 3 _Not at all | 4__ Don't |
| e. Hookah
know/Refused | 1 __Every day | 2 __Some days | 3 _Not at all | 4__ Don't |
| f. Gutka
know/Refused | 1 __Every day | 2 __Some days | 3 _Not at all | 4__ Don't |
| g. Dissolvable tobacco
know/Refused | 1 __Every day | 2 __Some days | 3 _Not at all | 4__ Don't |
| h. Other
know/Refused | 1 __Every day | 2 __Some days | 3 _Not at all | 4__ Don't |

26. Have you ever used chewing tobacco, snuff or dip as an alternative when smoking restrictions have kept you from smoking in certain places.

- 1 __ yes
2 __ no

27. Have you heard of the New York State Smokers' Quitline?

1. __ yes
2. __ no (skip to Q30)
3. __ don't know

28. If yes, how have you heard about The New York State Smokers' Quitline? Choose all that apply.
(Read Alternatives)

1. __ newspaper article
2. __ newspaper ad
3. __ radio
4. __ billboard
5. __ TV ads
6. __ movie slide
7. __ Internet
8. __ event: Specify: _____
9. __ other: specify: _____

29. Have you ever used the New York State Smokers' Quitline?

1. __yes
2. __no
3. __not sure

We are almost finished! Your information will remain anonymous but we need some general information.

30. What is your age? _____

31. Record sex (**do not ask**): 1 _____ Male 2 _____ Female

32. How many children live in your household who are younger than 18 years old? (**Record Number**) _____

33. Which one of the following best describes your race/ethnicity? (**Read alternatives**)

1. _____ White
2. _____ Black or African American
3. _____ Latino/Hispanic, white or non-white
4. _____ Asian
5. _____ Native Hawaiian or Other Pacific Islander
6. _____ American Indian, Alaska Native
7. _____ Other [**Please specify**] _____
8. _____ Don't know/Not sure

34. What is the highest grade or year of school you completed?

1. _____ Grades 1 through 8 (Elementary)
2. _____ Grades 9 through 11 (Some High School)
3. _____ Grade 12 or GED (High School Graduate)
4. _____ College 1 to 3 years (Some College or Technical School)
5. _____ Bachelor's Degree (College Graduate)
6. _____ Postgraduate Degree (Master's, M.D., Ph.D., J.D.)

35. Bearing in mind that this is completely confidential, please tell me which category best describes your yearly household income. Is it... (**Read categories**)

1. _____ Under \$25,000
2. _____ \$25 to \$49,000
3. _____ \$50 to \$74,000
4. _____ \$75 to \$99,000
5. _____ \$100 to \$149,000
6. _____ over \$150,000
7. _____ Don't know (**DO NOT READ**)
8. _____ Refused (**DO NOT READ**)

Thank you for taking the time to help us study this important issue.